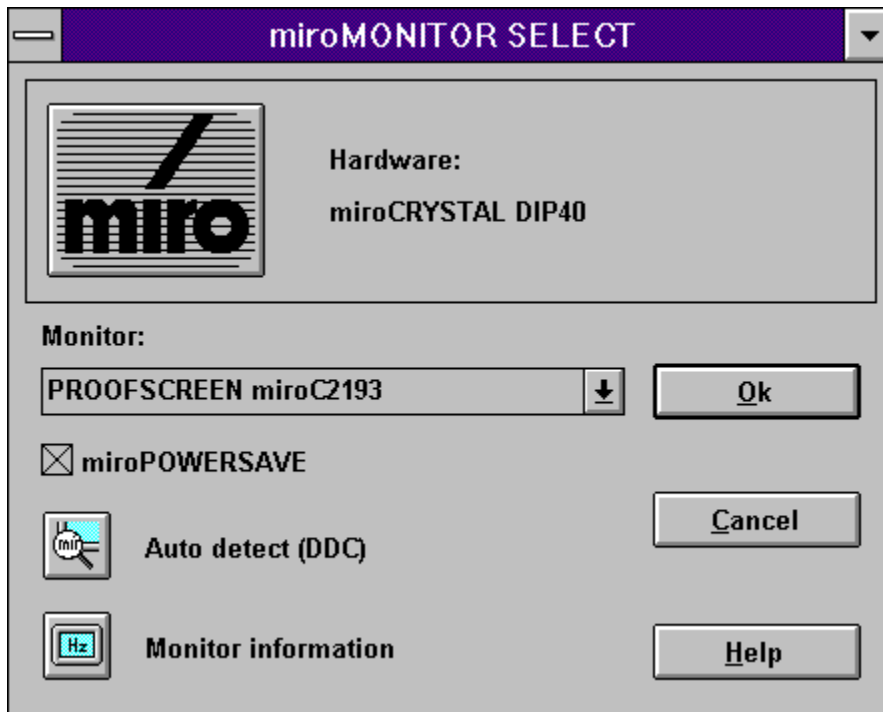




miroMONITOR SELECT

miroMONITOR SELECT allows to select your monitor.

[Hardware](#)
[Monitor](#)
[miroPOWERSAVE](#)
[Auto detect \(DDC\)](#)
[Monitor information](#)



Hardware

Under hardware you find the installed graphics board.

Monitor

Open the **Monitor** list box and select your monitor.

If your monitor is not in the list, select the monitor with the next smaller **horizontal scan frequency**.

If your monitor supports **DDC**, you can run the **auto detection**.

An **incorrect selection** can seriously damage your monitor. If you are in doubt, refer to your monitor documentation.

The **Monitor information** button gives you a list of all **resolutions** and **frequencies**.

miroPOWERSAVE

Activate **miroPOWERSAVE**, if your monitor(s) support(s) this tool.

Only use miroPOWERSAVE, if your monitor has a **power saving function** complying with the **VESA specification**!

Detailed information on miroPOWERSAVE is contained in the miro-win Software Manual.



Monitor information

The **Monitor information** button gives you a list of all resolutions and frequencies.



Auto detect (DDC)

With auto detection your monitor will be identified via DDC, if it supports DDC 1 or DDC 2b.

